

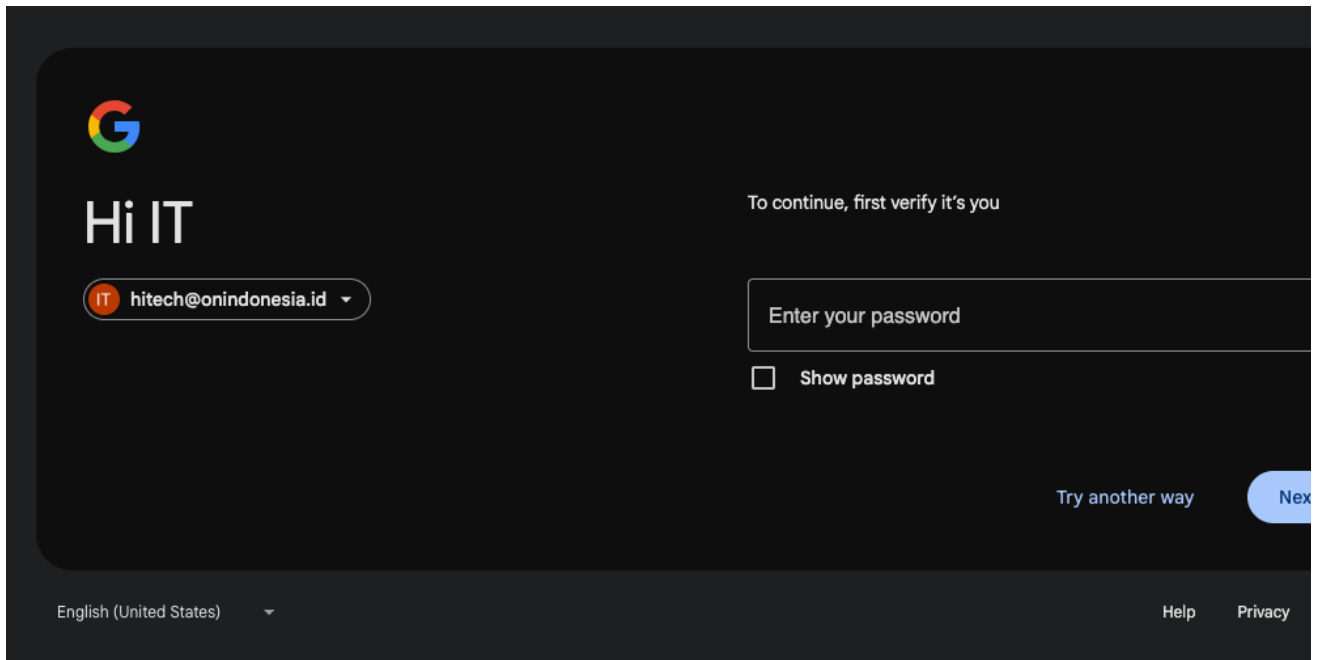
Manuals

- [Reactivate subs](#)

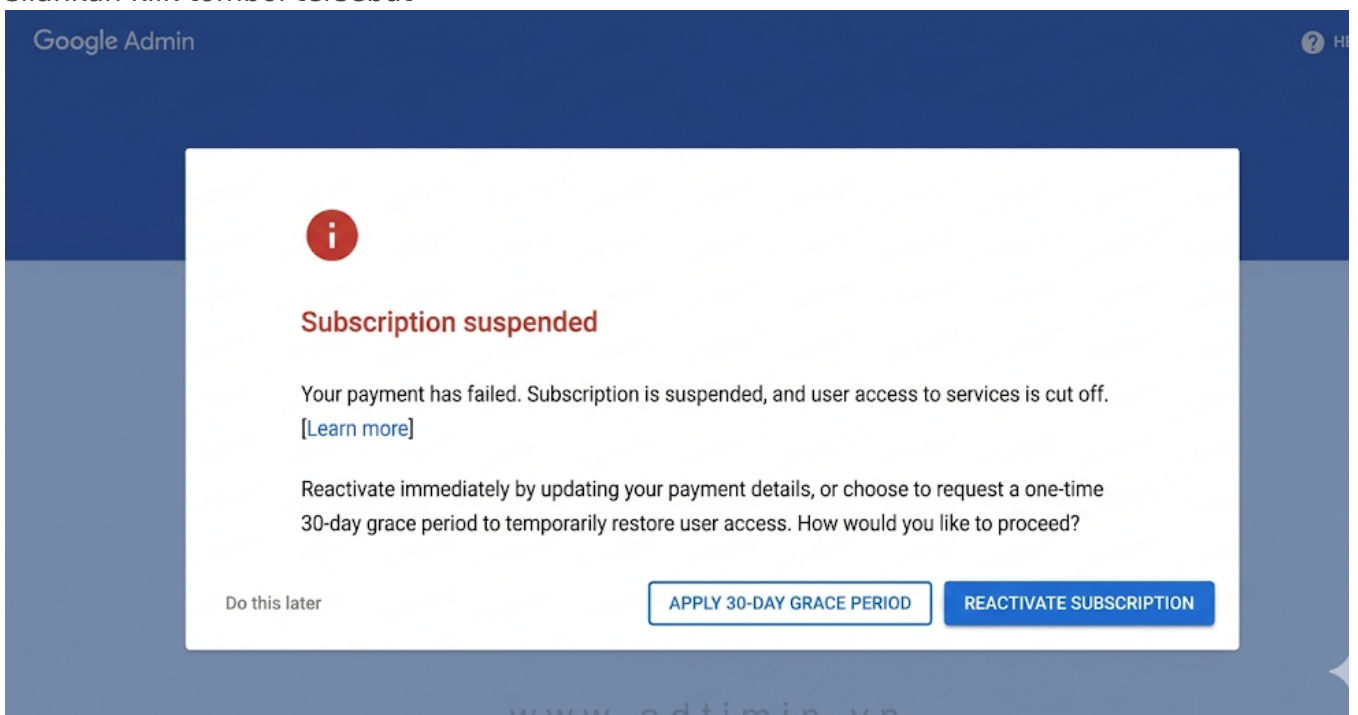
Reactivate subs

1. Jika akun google workspace tidak bisa diakses, silahkan akses google console dengan email berikut:

- administrator@onindonesia.id
- hitech@onindonesia.id



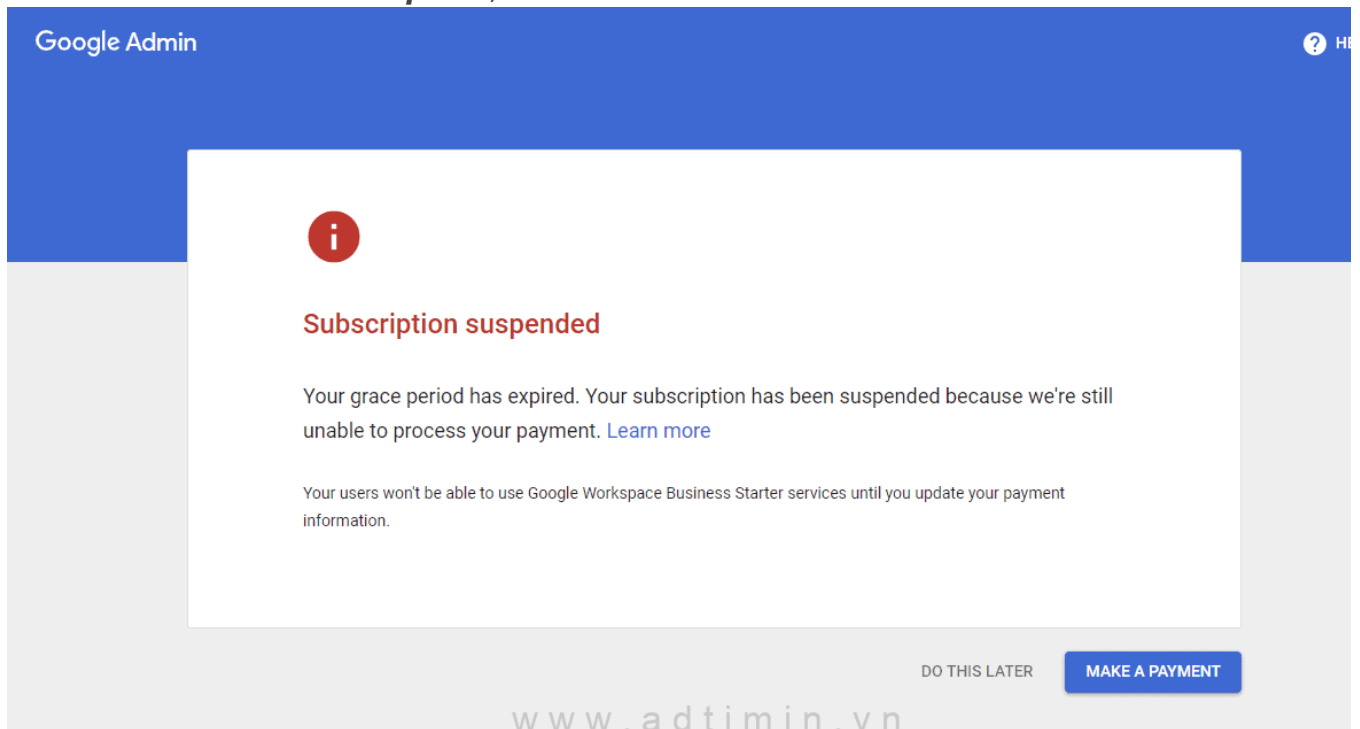
2. Jika dialog berikut muncul dan terdapat tombol **Reactivate subscription** di bawah, silahkan klik tombol tersebut



3. Google workspace sudah bisa dipakai kembali

Catatan:

Jika dialog saat login di akun sebelumnya seperti gambar dibawah, dimana tidak ada tombol **Reactivate subscription**, silahkan kontak tim finance



Google Admin

i

Subscription suspended

Your grace period has expired. Your subscription has been suspended because we're still unable to process your payment. [Learn more](#)

Your users won't be able to use Google Workspace Business Starter services until you update your payment information.

DO THIS LATER **MAKE A PAYMENT**

www.adtimin.vn